

Figure S13

mapping score  
( $-\log_{10}$  Bonferroni  $p$ )

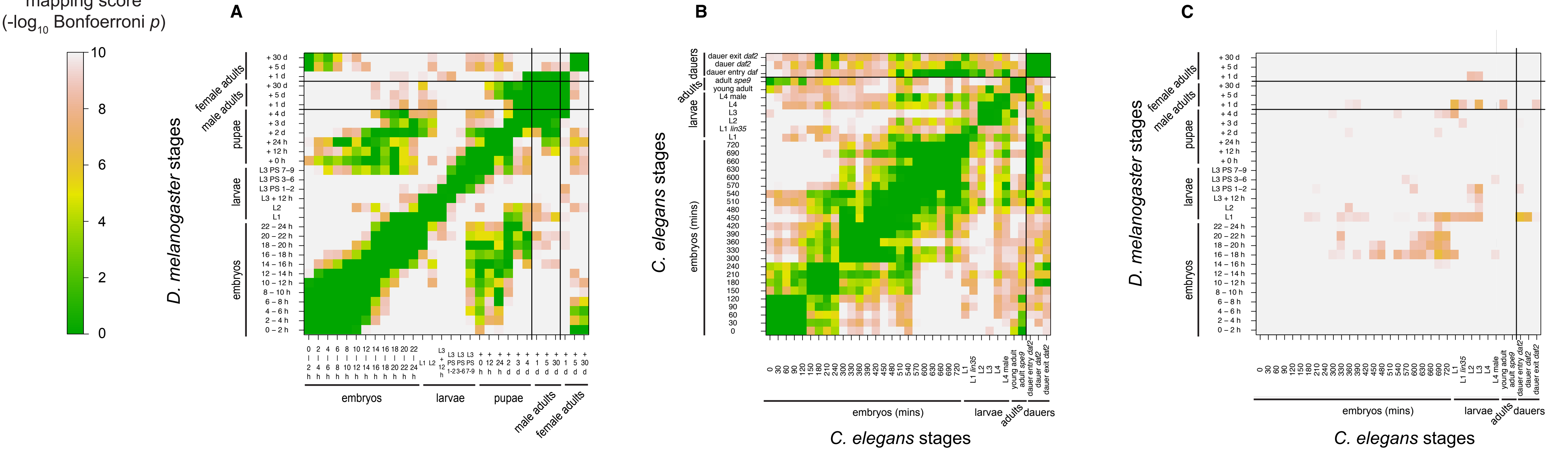


Figure S13. Comparison results of developmental stages based on gene ontology (GO). Mapping scores shown in the heatmaps are  $-\log_{10}$  transformed Bonferroni corrected  $p$ -values, whose calculation is described in Methods. (A) Stage comparison within *D. melanogaster*. (B) Stage comparison within *C. elegans*. (C) Stage comparison between *D. melanogaster* and *C. elegans*. For detailed information on the stage labels, please refer to Table S2.